



# Mineral Element Contents and Antisickling Activity of *Cyttaranthus congolensis* and *Hypoxis angustifolia* Traditionally Used to Treat Sickle Cell Disease in Kwilu Province, Democratic Republic of the Congo

Jules M. Kitadi <sup>a</sup>, Clément L. Inkoto <sup>b</sup>,  
Sha-Tshibey Tshibangu <sup>c</sup>, Dorothée Dinangayi Tshilanda <sup>c</sup>,  
Taba Kalulu <sup>c</sup>, Papy Kawata <sup>d</sup>, Koto-Te-Nyiwa Ngbolua <sup>b</sup>  
and Pius Tshimankinda Mpiana <sup>c\*</sup>

<sup>a</sup> University of Kikwit, Kikwit, Kwilu, Democratic Republic of the Congo.

<sup>b</sup> Department of Biology, Faculty of Science, University of Kinshasa, P.O. Box-190, Kinshasa, Democratic Republic of the Congo.

<sup>c</sup> Department of Chemistry, Faculty of Science, University of Kinshasa, P.O. Box-190, Kinshasa, Democratic Republic of the Congo.

<sup>d</sup> Department of Environment, Faculty of Science, University of Kinshasa, P.O. Box-190, Kinshasa, Democratic Republic of the Congo.

## Authors' contributions

This work was carried out in collaboration among all authors. All authors read and approved the final manuscript.

## Article Information

DOI: 10.9734/IJBCRR/2022/v31i10790

## Open Peer Review History:

This journal follows the Advanced Open Peer Review policy. Identity of the Reviewers, Editor(s) and additional Reviewers, peer review comments, different versions of the manuscript, comments of the editors, etc are available here: <https://www.sdiarticle5.com/review-history/93898>

Original Research Article

Received: 02/10/2022  
Accepted: 05/12/2022  
Published: 14/12/2022

\*Corresponding author: E-mail: [ptmpiana@gmail.com](mailto:ptmpiana@gmail.com), [pt.mpiiana@unikin.ac.cd](mailto:pt.mpiiana@unikin.ac.cd);

## ABSTRACT

The objective of the present study was to determine the composition in mineral elements, the antisickling activity and the osmotic brittleness test, of the twenty three extracts of two plants *Cyttaranthus congolensis*, *Hypoxis angustifolia* used in the management of sickle cell disease by the traditional healers in Kwilu province. Mineral composition analyses of these two plants were performed using X-ray fluorescence spectrometric method. Twenty three( 23) mineral elements were identified in each of these two plants among others: Potassium (K), Phosphorus (P), Calcium (Ca), Sodium (Na), Magnesium (Mg), Sulfur (S), Chlorine (Cl) and trace elements such as: Aluminum (Al), Silicon (Si), Vanadium (V), Chromium (Cr), Manganese (Mn), Iron (Fe), Nickel (Ni), Copper (Cu), Zinc (Zn), Selenium (Se), Bromine (Br), Molybdenum (Mo), Tin (Sn), Iodine (I), Barium (Ba) and Lead (Pb). Mineral elements related to sickle cell disease are: Iron (Fe), Zinc (Zn), Selenium (Se), Copper (Cu), Calcium (Ca), Magnesium (Mg) and Manganese (Mn). Of all these elements, Potassium and Calcium are in higher content while Lead, Tin, Bromine, Copper and Nickel are in trace amounts. The antisickling activity of *Cyttaranthus congolensis* and *Hypoxis angustifolia* extracts, was tested using the Emmel test. The results obtained showed a significant *in vitro* antisickling activity for both plants. The osmotic fragility test used to confirm the Emmel test showed that the hemolysis rate decreased with increasing NaCl concentration. In the presence of anthocyanins, the antihemolytic activity at different NaCl concentrations was higher than the control. This indicates the action of the extracts of these plants on the osmotic fragility of red blood cell membrane.

**Keywords:** *Cyttaranthus congolensis*; *Hypoxis angustifolia*; osmotic fragility; sickle cell disease; hemolysis; mineral elements; fluorescence.

## 1. INTRODUCTION

“Medicinal plants are an important source of health care worldwide” [1,2]. “Traditional medicine was used extensively due to population growth and inaccessibility to modern medicines” [3]. “Nearly 80% of the population relies on traditional medicine for their primary health care, according to the World Health Organization” [4].

“In Africa, this demand is not only a result of the inaccessibility to modern medicines and their the high costs, but traditional medicine, which is very often considered a more appropriate treatment method” [5]. “In the Democratic Republic of Congo, urban and rural populations are increasingly turning to the use of medicinal plants for their health problems” [5-7]. Indeed, this country rainforest is a vast reservoir of plant species that could provide lead bioactive molecules or molecules that would serve as a matrix for the synthesis of more active derivatives "hits" or plants that could be used for the formulation of phytomedicines [8,9]. Although modern medicine is highly developed nowadays, some diseases still do not have an effective cure [10-13]. Among these diseases we can mention sickle cell disease.

“Sickle cell disease a hereditary disease affects nearly 5% of the world's population. It is caused

by a mutation in the hemoglobin beta globin gene and is characterized by severe anemia, vaso-occlusive crises and high susceptibility to both viral and bacterial infections” [14,15]. “This disease is characterized too by a loss of mineral elements important in the functioning of the body” [16].

“Minerals are natural chemical elements that the body uses to activate certain biochemical processes. They include functionally important inorganic compounds such as iron (Fe) in hemoglobin and cytochrome or zinc (Zn) in insulin” [17]. “It is also established that plant leaves are potential sources of minerals and vitamins and are apparently inexpensive” [18]. “In the world, and more particularly in the DRC some studies have been conducted on anti-sickle cell plants [15,19] and some of these plants have been found to be responsible for antifalcemic activity”. Among these plants used in traditional medicine for the management of sickle cell disease are *Cyttaranthus congolensis* and *Hypoxis angustifolia*. Traditional uses, chemical composition and biological activities of these two plants have been reported in the literature [18,20].

In order to scientifically validate the phyto-therapeutic richness of the DRC, two plants were chosen: *Cyttaranthus congolensis*

and *Hypoxis angustifolia*, used in the Congolese pharmacopoeia for the treatment of sickle cell disease. The general objective of this study was to determine the mineral composition, to assess the antisickling activity, and osmotic fragility test of the two plants used for the management of sickle cell disease.

## 2. MATERIALS AND METHODS

The leaves of *Cyttaranthus congolensis*, and the bulbs of *Hypoxis angustifolia* used in this study were collected in May and July 2016 in Masi-Manimba Territory, Kwilu Province, whose geographical coordinates are: 5°02'01" South, 18°50' 01" East. These samples were dried in the dark at the University of Kikwit in the Basic Science Laboratory. They were then grounded to a fine powder. Total extracts of anthocyanins from both plants showed significant antisickling activity. The analysis of the results was done with Excel. The osmotic fragility test was done in order to have an idea on the action of the extracts of these two plants on the osmotic fragility of red blood cell membrane.

### 2.1 Detection of Mineral Elements

Detection and quantification of mineral elements was done by the X-ray fluorescence spectrometric method. This method of analysis allows determination of several elements in the same sample. A quantity of the powder was compressed into pellets through the hydraulic press for each plant and the resulting pellets were introduced into the X-ray fluorescence spectrophotometer for reading. Analysis of the results was done using Microsoft Excel package.

### 2.2 Preparation of the Extracts

#### ➤ Preparation of the aqueous extract

30 g of the powder of each sample was macerated in 300 mL of distilled water for 48 hours. We then filtered them using a filter paper. The filtrate obtained constitutes the aqueous extract for the evaluation of the anti-sickle cell activity.

#### ➤ Preparation of the methanolic extract

Using a balance, we weighed 30 g of the powder of each sample which we macerated in 300 mL of methanol for 48 hours. We then filtered them

using a filter paper. The filtrate obtained constitutes the methanolic extract for the evaluation of the anti-sickle cell activity.

### 2.3 Antisickling Activity

The blood sample was mixed with the plant extracts at different concentrations (with physiological water as dissolution solvent). The Emmel test was used to evaluate the antisickling activity [15]. In this study, the Emmel test was modified as previously reported by Mpiana et al. [21]. Microscopic images were obtained using a MOTIC 30207598 light microscope. A KODAK EASY SHARE C613 camera was used to digitize the micrographs. These were then processed using the MOTIC images 2000 software, version 1.3.

### 2.4 Osmotic Fragility Test

Red blood cell (RBC) fragility was determined as previously described by Mpiana et al. [22]. Cells were placed in a graded series of hypotonic saline solutions buffered at pH 7.4 with 150 mM phosphate. Concentrations ranging from 0.2% to 0.9% NaCl were obtained in a final volume of 10 mL. A 10 µL sample of washed erythrocytes was added to 1990 µL of each hypotonic saline solution and immediately mixed by inverting several times. The tubes were allowed to stand for 150 min at room temperature (25°C). To determine the effect of anthocyanin extracts, Ten microliters (10 µL) of extract (1 mg/mL) was added to 1980 µL of each hypotonic saline solution, followed by 10 µL of RBCs and the mixture treated as described previously. The number of unlysed erythrocytes at each saline concentration was determined by light microscopy (OLYMPUSx21) and hemacytometer (Neubauer cell). Hemolysis was calculated using the following equation:

$$\text{Number of erythrocytes after 150 min} \times 100 / \text{number of erythrocytes inoculated (0 min)}.$$

The mean corpuscular fragility (determined from the saline concentration causing 50% hemolysis of red blood cells) was obtained from a lysis (%) versus NaCl concentration curve.

The effect of anthocyanins or organic acids on the ability of sickle cells to hydrate while resisting hemolysis following hyposmotic (hypotonic) shock is exploited as an index of their biological activity. This index reflects the effect of these

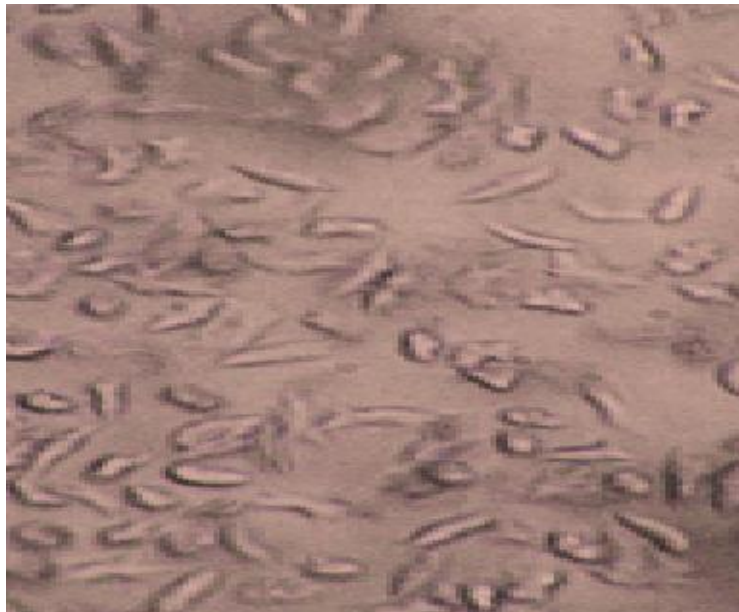
metabolites on the membrane stability of erythrocytes.

The effect of anthocyanins on red blood cell membrane fragility is assessed by comparing the % hemolysis rate of SS blood cells alone and those treated with anthocyanins [23,24].

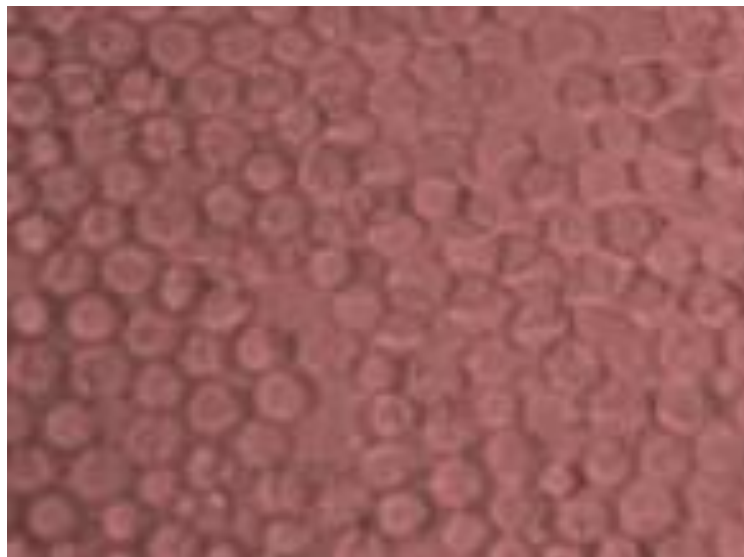
### 3. RESULTS AND DISCUSSION

Fig. 1 shows a micrograph of SS blood alone.

Micrographs of SS blood in the presence of total extracts of *Cyttaranthus congolensis* leaves is shown in Fig. 2.



**Fig. 1. Optical micrograph of untreated (control) SS blood erythrocytes [0.9% NaCl, 2% Na<sub>2</sub>S<sub>2</sub>O<sub>5</sub>, 500 X magnification]**



**Fig. 2. Optical microphotographs of SS blood erythrocytes treated with the total extracts of *Cyttaranthus congolensis* leaves, [NaCl 0.9%, Na<sub>2</sub>S<sub>2</sub>O<sub>5</sub> 2%, Magnification: 500 X]**

**Table 1. Mineral content of *Hypoxis angustifolia* and *Cyttaranthus congolensis* plants used in the management of sickle cell disease**

ELTS	<i>H. angustifolia</i>	<i>C. congolensis</i>	<i>Vigna unguiculata</i> Famata et al. (2013)	<i>Vigna unguiculata</i> Kure et al. (2016)	<i>Alchornea cordifolia</i> Ebenyi et al. [27]	<i>Alchornea cordifolia</i> Philip et al. (2016)	<i>A.senegalensis</i> (Yisa et al. [30])	<i>V. unguiculata</i> (Yoka et al. [28])
Cu	4,94	4,49	-	-	3,70	58,35	130,00	197,00
Fe	56,91	790,1	6,0	9,88	1,40	192,5	1800,00	197,00
Mn	10,19	46,87	-	1,00	1,25	32,5	290,00	11,6
Se	ND	ND	5,72	6,10	4,12	-	480,00	19,9
Mg	550,10	3477,53	-	-	3,60	-	-	-
Zn	25,93	47,88	10,00	190,22	5,60	22,00	1350	24,5

H: *Hypoxis*, C: *Cyttaranthus*, V: *Vigna*

Comparing Fig. 2 to Fig. 1 representing SS blood alone used as a control, we notice that Fig. 2 shows that the majority of erythrocytes in SS blood, although under hypoxic conditions, return to their normal shape. This modification of the morphology of sickle cells indicates an antisickling activity of the total extracts of these plants taken as an illustration.

This behavior was already observed for anthocyanins and organic acids extracted from other plants [25-27]. Our results therefore confirm those obtained in previous studies [25]. Table 1 gives mineral content of these two plants.

The content of Fe in *Cyttaranthus congolensis* plant in this study is higher than that obtained in the bulbs of *Hypoxis angustifolia*. It is higher than that obtained by the other researchers except in the leaves of *Annona senegalensis*. The lowest content of this element is that obtained by Ebenyi et al. [27]. Cu has a high content in *Vigna unguiculata* in study reported by Yoka et al. [28] as was the case for Fe while the lowest content of this element was obtained by Ebenyi et al. [27] or 3.70 ppm. The content of this element (Fe) for this study is between that of Philip et al. [29] found in the leaves of *Alchornea cordifolia* and in the leaves of *Cyttaranthus congolensis*. The element Zn is found in high content in *Annona senegalensis* studied by Yisa's et al while it is in

low content in *Alchornea cordifolia* studied by Ebenyi et al. [27] That of the two plants in this study is between *Cyttaranthus congolensis* and *Alchornea cordifolia* studied by Philip et al for *Hypoxis angustifolia* and between that of the seeds of *Vigna unguiculata* studied by Kure et al and that of the bulb of *Hypoxis angustifolia* in this study. Se was not quantified in the two plants of this study its high content was obtained in *Annona senegalensis* studied by Yoka et al. [30]. The highest content of Mn obtained in this research is that in *Cyttaranthus congolensis* i.e. 46.87 ppm but low compared to that obtained by Yisa et al. [30] in leaves of *Annona senegalensis*. It was also noticed that the Fe content obtained by Yisa et al. [30] (1800.00 ppm) is higher compared to that of these two plants under study. It follows that the Mg content is higher in the leaves of *Cyttaranthus congolensis*, it is low in the leaves of *Alchornea cordifolia* studied by Ebenyi et al. [27].

A similar study conducted by Elenga et al. [31] on *Phytolacca dodecandra*, a kind of wild spinach, and *Spinacia oleracea*, or spinach, and by Houmkali [32] on *Salvinia nymphellula*, a species of aquatic fern, showed similar results to those obtained in this study for the content of iron, an element that is essential for the survival of living beings because, it is iron hemoglobin that conveyed oxygen via the blood to the tissues.

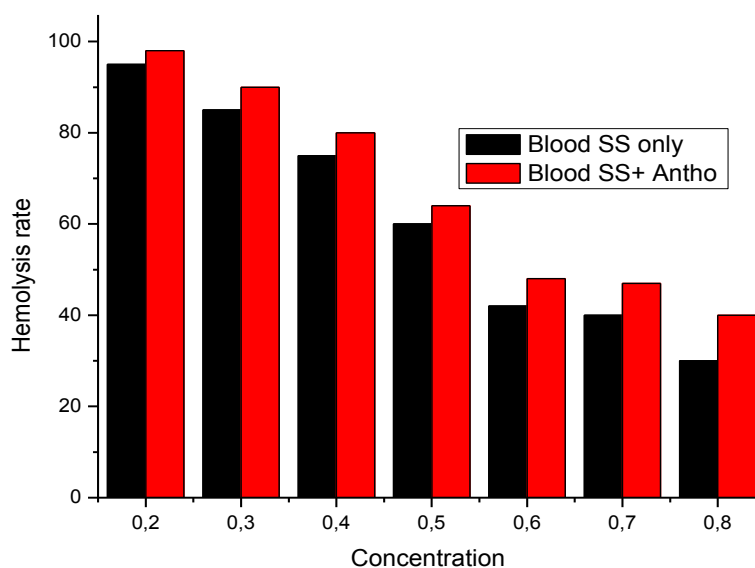


Fig. 3. NaCl osmotic fragility test in %

In order to assess the osmotic fragility of sickle cell, the rate of hemolysis of erythrocytes at different NaCl concentrations, in the presence and absence of *anthocyanin* extracts was measured as shown in Fig. 3.

The rate of hemolysis decreases with increasing NaCl concentration (Fig. 3). In the presence of anthocyanins, the antihemolytic activity at different NaCl concentrations is higher than the control. This means that anthocyanins improve the hydration capacity of blood cells. The rehydration of cells prevents polymerization of HbS and falciformation of red blood cells [22].

Anthocyanins could therefore, in addition to their probable action on HbS solubility, have a direct action on the erythrocyte membrane probably on the phospholipids of erythrocyte membranes.

Indeed, the membrane of sickle cells is generally more rigid than that of normal erythrocytes. This results in a decrease in the efflux of  $Ca^{++}$  ion from the cell. The intracellular accumulation of calcium ions leads to cellular dehydration and consequently to an intracellular increase in HbS concentration. This increase in HbS concentration inside red blood cells accelerates polymerization of HbS, which precipitates on the membrane and thus enhances its rigidity [33]. Water leaving the cells can accumulate in the cellular interstices and cause generalized edema leading to hand-foot syndrome in young children with sickle cell disease.

Rehydration of cells by anthocyanins could therefore lead to the reduction of edema. The main pathways of dehydration of sickle cell red blood cells are the co-transport (K-Cl) and the  $K^+$  channel activated by a calcium influx, called Gardos channel. The latter is active upon deoxygenation inducing polymer formation and increased membrane permeability to mono- and divalent cations, including the calcium ion  $Ca^{++}$ . The transient increase in intraglobular ionized calcium is sufficient to activate the Gardos  $K^+$  channel and induce potassium and water leakage from red blood cells and reticulocytes [18,22,24].

#### 4. CONCLUSION

The objective of this study was to determine the mineral composition, the antifalcemic activity and the osmotic fragility test of the extracts of the two medicinal plants used in traditional Congolese medicine in the Kwilu province in the

management of sickle cell disease. Results obtained showed a clear correction of the falciformity of the red blood cells because these falciform red blood cells recovered their normal form in contact with the total aqueous extracts of these plants. In addition to this correction, the extracts of these plants showed a high antihemolytic activity because it was found that the rate of hemolysis decreased with increasing NaCl concentration. This means that anthocyanins improve the hydration capacity of blood cells.

Results obtained from the fluorescence spectrophotometric method show that both plants contain 23 distinct mineral elements each. These results also show that calcium and potassium are the most abundant in the leaves of *Cyttaranthus congolensis* than in the bulbs of *Hypoxis angustifolia*. On the other hand, the iron content is by far higher in the leaves of *Cyttaranthus congolensis* than in the bulbs of *Hypoxis angustifolia*. Other elements such as magnesium, zinc, selenium, manganese, copper and cobalt present in these two plants play important roles in sickle cell disease. Magnesium, in addition to being a cofactor of enzymes, reduces the number of abnormal erythrocytes in sickle cell patients and improves the hydration of red blood cells. Comparing the mineral contents of this research with those of the other research teams, a clear difference emerges which is at least due to the method used by each team and also to the mineral composition of the soil where these different plants are harvested.

#### COMPETING INTERESTS

Authors have declared that no competing interests exist.

#### REFERENCES

1. Poumari M, Balasubiramanian KK. Evaluation of mineral contents in some medicinal plants used by traditional healers. International Journal of Research in Pharmacy and Pharmaceutical Sciences. 2017;2(4):30-34.
2. Hanan ZA, Ibrahim NH, Younis FE, Shaker YM, Donia GR. Scrutinizing of trace elements and antioxidant enzymes changes in Barki Ewes Fed Salt-tolerant plants under South Sinai conditions. Journal of American Science. 2014;10(2):54-62

3. Panzu NN, Inkoto CL, Ngbolua KN, Mukeba FB, Kitadi JM, Taba K, Mbala BM, Tshilanda DD, Kayembe J-PK, Mpiana PT. Review on the phytochemistry, toxicology and bioactivities of *Euphorbia hirta* L.: A potential antisickling medicinal plant species. JMPHTR. 2020;7:8-18.
4. Inkoto CL, Kayembe J-PK, Mpiana PT, Ngbolua KN. A review on the Phytochemistry and Pharmacological properties of *Picralima nitida* Durand and H. (Apocynaceae family): A potential anti Covid-19 medicinal plant species. Emer Life Sci Res. 2020;6(1):64-75.
5. Iteku JB, Bongo GN, Mbiya JN, Wambale JM, Mutwale PK, Inkoto CL and Ngbolua KN. Phytochemical Analysis and Evaluation of Bioactivities of *Cola acuminata* Extracts. Journal of Biomedical and Life Sciences. 2021;1(1): 51-65.
6. Inkoto CL, Masengo CA, Falanga CM, Membo BW-M, Amogu J-JD, Mahendra ISM, Kayembe J-PK., Mpiana PT, Ngbolua K.N. A Mini-Review on the Phytochemistry and Pharmacology of the Plant *Carica Papaya* L. (*Caricaceae*). Britain International of Exact Sciences (BloEx) Journal. 2020;(3):663-675.
7. Inkoto LC, Bongo NG, Kapepula MP, Masengo AC, Gbolo ZB, Tshiana C et al. Microscopic features and chromatographic fingerprints of selected congolese medicinal plants: *Aframomum alboviolaceum* (Ridley) K. Schum, *Annona senegalensis* Pers. and *Mondia whitei* (Hook. f.) Skeels. Emergent Life Sciences Research. 2018;4(1):1-10.
8. Ngbolua KN, Rafatro H, Rakotoarimanana H, Ratsimamanga US, Mudogo V, Mpiana PT, Tshibangu DST. Pharmacological screening of some traditionally-used antimalarial plants from the Democratic Republic of Congo compared to its ecological taxonomic equivalence in Madagascar, Int. J. Biol. Chem. Sci. 2011; 5(5):1997-1804.
9. Ngbolua KN, Hajatiana R, Herintsoa R, Suzanne U-R, Mudogo V, Mpiana PT, Tshibangu DST. Comparative antimalarial and cytotoxic activities of two *Vernonia* species: *V. amygdalina* from the Democratic Republic of Congo and *V. cinerea* subsp *vialis* endemic to Madagascar, Int. J. Biol. Chem. Sci. 2011; 5(1):345-353.
10. Mbadiko CM, Inkoto CL, Gbolo BZ, Lengbiye EM, Kilembe JT, Matondo A, Mwanangombo DT, Ngoyi EM, Bongo GN, Falanga CM, Tshibangu DS-T, Tshilanda DD, Ngbolua KN and Mpiana PT. A Mini Review on the Phytochemistry, Toxicology and Antiviral Activity of Some Medically Interesting Zingiberaceae Species, JOCAMR. 2020;9(4):44-56.
11. Kitadi MJ, Inkoto CL, Lengbiye EM, Tshibangu DST, Tshilanda DD, Ngbolua KN, Taba M, Mbala BM, Schmitz B, Mpiana PT. Mineral composition of medicinal plants traditionally used in the management of sickle cell disease in the Kwilu province (Congo- Kinshasa). Sumerianz Journal of Biotechnology. 2021;(4):16-21.
12. Inkoto CL, Ngbolua KN, Bokungu PE, Masengo CA, Iteku JB, Tshilanda DD, Tshibangu DS-T and Mpiana PT. Phytochemistry and Pharmacology of *Aframomum angustifolium* (Sonn.) K. Schum (*Zingiberaceae*): A Mini Review. SARJNP. 2021;5(1):21-36.
13. Inkoto CL, Ngbolua KN, Kilembe JT, Masengo CA, Lukoki FL, Tshilanda DD, Tshibangu DS-T, Mpiana PT. A Mini Review on the Phytochemistry and Pharmacology of *Aframomum alboviolaceum* (*Zingiberaceae*). South Asian Research Journal of Natural Products. 2021;4(3): 24-35.
14. Mpiana PT, Bokota, MT, Ndjele MBL, Mudogo V, Tshibangu DST, Ngbolua KN, Atibu EK, Kwembe JTK and Makelele LK. Antisickling activity of three species of *Justicia* from Kisangani (DR Congo). J. tenella, J. gendarussa and J.insularis, Int. J. Biol. Chem. Sci. 2010;4(6):1953-1961.
15. Bongo G, Inkoto C, Masengo C, Tshiana C, Lengbiye E, Djolu R. and Kapepula M et al. Antisickling, Antioxidant and Antibacterial Activities of *Aframomum alboviolaceum* (Ridley) K. Schum, *Annona senegalensis* Pers. and *Mondia whitei* (Hook. f.) Skeels. American Journal of Laboratory Medicine. 2017;2:52-59.
16. Kitadi MJ, Mazasa PP, Tshibangu DST, Memvanga PB, Ngbolua KN, Taba NK, Noki PV, Mpiana PT. Anti-sickling and antioxidant activities of anthocyanins extracts from *Dissotis brazzae* Cogn (*Melastomataceae*). Journal of Advancement in Medical and Life Sciences; 2015.



17. Khan AR, Awan FR. Metals in the pathogenesis of type 2 diabetes. *J Diabetes Metab Disord.* 2014;13(1):16. DOI: 10.1186/2251-6581-13-16 PMID: 24401367; PMCID: PMC3916582
18. Kitadi MJ. Détermination de la teneur en éléments minéraux et de l'activité antidrepanocytaire des plantes médicinales utilisées dans la Province de Kwilu (R.D. Congo). Thèse de doctorat, Département de chimie, Faculté des Sciences, Unikin., Inedit. 2021;187.
19. Tshilanda DD, Onyamboko DVN, Babady PB, Mutwale PK, Tsalu PV, Tshibangu DST, Ngombe NK., Ngbolua KN, Mpiana PT. Chemical fingerprint and anti-sickling activity of Rosmarinic acid and Methanolic extracts from three Species of Ocimum from DR Congo. *Journal of Biosciences and Medicines.* 2016;4:59-68.
20. Kitadi MJ, Pambi MP, Tshibangu DST, Mushagalusa KF, Tshilanda DD, Ngbolua KN, Mpiana PT. Ethnopharmacological Survey and Antisickling Activity of Plants Used in the Management of Sickle Cell Disease in Kikwit City, DR Congo. *Hindawi Evidence-Based Complementary and Alternative Medicine.* 2020;10.
21. Mpiana PT, Tshibangu DST, Shehonde OM, Ngbolua KN. In-vitro antidrepanocytary activity (antisickle cell anaemia) of some Congolese plants. *Phytomedicine.* 2007;14(2-3):192-195.
22. Mpiana PT, Makelele LK, Oleko RW, Bokota MT, Tshibangu DST, Ngbolua K.N, Mbala MB, Atibu EK, Nsimba SM. Antisickling activity of medicinal plants used in the management of Sickle Cell Disease in Tshopo district, D.R. Congo, *Australian Journal of Medical Herbalism.* 2010;22(4):132-137.
23. Ngbolua KN, Mpiana PT, Tshibangu DST, Mazasa PP, Gbolo ZB, Atibu EK, Kadima JN, Kasali FM. *In vitro* anti-sickling and radical scavenging activities of a poly-herbal formula (Drepanoalpha®) in Sickle cell erythrocyte and acute toxicity study in Wistar albino rats. *European Journal of Medicinal Plants.* 2014;4(10):1251-1267.
24. Kitadi JM, Inkoto CL, Lengbiye EM, Tshibangu DS-T, Tshilanda DD, Ngbolua KN, Taba KM, Mbala BM, Schmitz B, Mpiana PT. Antisickling activity and mineral content of *Hura crepitans* L., *Alternanthera bettzickiana* (regle) g. Nicholson and *Dissotis brazzae* cogn, plants used in the management of sickle cell disease in kwilu province, democratic republic of the Congo. *ejpmr.* 2019;6(12):79-83
25. Mpiana PT, Balangayi EK, Kanangila AB, Kalonda EM, Ngbolua KN, Tshibangu DST, Atibu EK, Lumbu JBS. Activité antidrepanocytaire et thermodégradation des anthocyanes extraits de *Sterculia quinqueloba* et *Ficus capensis*, *Int. J. Biol. & Chem. Sci.* 2009;3(3):551-560.
26. Tshibangu DS. Phytochemical and antidrepanocytosis studies of *Cajanus cajan*, *Callistemon viminalis*, *Melaleuca bracteata* Var. revolution gold and *Syzygium guineensis*. Master thesis, Faculty of science and Agriculture, University of KwaZulu Natal, Republic of South Africa; 2010.
27. Ebenyi LN, Uraku AJ. Phytochemical and nutritional evaluation of aqueous and ethyl acetate leaf extracts of *Alchornea cordifolia*. *Research Journal of Pharmacology and Pharmacy.* 2017;1(5): 2572-8377.
28. Yoka J, Loumeto JJ, Gaudentius JD, Akouango P, Epron D. Evaluation des teneurs en éléments minéraux des feuilles de Niébé cultivés dans la zone Boundji, République du Congo. *Journal of Applied Biosciences.* 2014;79:6799-6807.
29. Alikwe CN, Owen OJ. Evaluation of the chemical and phytochemical constituents of *Alchornea cordifolia* leaf meal as potential feed for monogastric livestock. 2014;2(3):360-368.
30. Yisa J, Egila JN, Darlinton AO. Chemical composition of *Annona senegalensis* from Nupe land, Nigeria. *African Journal of Biotechnology.* 2010;9(26):4106-4109.
31. Elenga M, Massamba J, Kobawila SC, Makosso VG et Silou T. Evaluation et amélioration de la qualité nutritionnelle des pâtes et des bouillies de maïs fermenté au Congo. *Int. J. Biol. Chem. Sci.* 2009;3(6):1274-1285.
32. Martínez-Ballesta MC, Dominguez-Perles R, Moreno DA, Muries B, Alcaraz-López C, Bastías E, García-Viguera C, Carvajal Minerals in plant food: effect of agricultural practices and role in human health. *A review Agron. Sustain. Dev,* 2010;30:295–309 DOI: 10.1051/agro/2009022
33. Masengo CA, Ngbolua KN, Gbolo BZ, Inkoto CL, Robijaona B, Iteku JB,

Ilumbe GB, Mpiana PT. Drépanocytose:  
Approche Bioclinique, Cibles Biologiques  
d'Intérêt Thérapeutique et Perspectives.

International Journal of Progressive  
Sciences and Technologies (IJPSAT).  
2021;28(2):539-545.

---

© 2022 Kitadi et al.; This is an Open Access article distributed under the terms of the Creative Commons Attribution License (<http://creativecommons.org/licenses/by/4.0>), which permits unrestricted use, distribution, and reproduction in any medium, provided the original work is properly cited.

*Peer-review history:*

*The peer review history for this paper can be accessed here:*  
<https://www.sdiarticle5.com/review-history/93898>